



1907 Ascension Blvd | Suite 240
Arlington | TX 76006

1234 North Walnut Street
Pasadena, CA 91104


NON-
PROFIT
INDICIA

SERVING TO EMPOWERSM
LIFEINABUNDANCE.ORG



**TRANSFORM.
TOGETHER.**
2013 ANNUAL REPORT





SOUTH SUDAN

Under the **LEADERSHIP** of God, stewarded by Dr. Florence Muindi, LIA is one of the best **EXAMPLES** of a ministry that truly understands that **ALL** people are very *capable* to make changes in their lives and when collected into a **LOCAL CHURCH**, their world. This is not because they are simple humanitarians, but because they **RECOGNIZE** that each human being is created in **GOD'S IMAGE** and each local church has the authority to **IMPACT** the world in which they **LIVE**. A *beautiful* ministry that calls us all to that for which we were created.

Ron Barnes, Global Outreach Pastor, Flatirons Community Church

KENYA



During the last two decades, we have been blessed with consistent and meaningful growth. 2013 will go down in LIA's history as a year of embracing organizational structure to catapult LIA into a new era of capacity, efficiency and impact.

Empowerment and continued capacity building is our primary activity. Equipping communities and teams from the ground up is crucial to the success of our work. Most importantly, we seek to equip the church and its leaders for long-term impact in the communities that are hurting and vulnerable.

During this last year, we saw the rounding out of the LIA senior leadership team with the addition of Tom Kemner, our US-based partnerships director. He joined the already-capable group of leaders that I am fortunate to work alongside.

With their leadership and oversight of the country and development teams, I am able to continue carrying the

LIA vision forward with complete confidence. Last year, the LIA international board guided the completion of a LIA restructuring that resulted in the introduction and piloting of new governance and operation manuals, ensuring that all teams and staff are adhering to and modeling best practices and accountability.

Combined, these tools enable LIA, although spread across different countries and cultures, to implement the same model of ministry and the ability to show comparable results.

We have come to a stage where there is shared ownership. The LIA global team prays as a family every Monday and we have assumed corporate responsibility to fulfill the mission of LIA. The ministry is highly participative and collaborative. Each team carries decision-making and problem-solving responsibilities. They serve in a God-honoring way that enables the poor to "own" their own development. The vision of LIA has been internalized and is being replicated.

LETTER from THE PRESIDENT

Last year marked the fulfillment of our seven-year strategic plan. This period was capped by tremendous progress and achievement milestones. This included hosting the first inaugural Global Missions Health Conference Africa, breaking ground on LIA's new training center in Kenya, and growing service to the poor and vulnerable.

We could not be more excited to begin this next season for LIA! And we are ever aware that we could not have come to this point without God's favor and guidance.

THANKFUL we **SERVE** our King together.



In Christ,

Dr. Florence Muindi
Founding President/CEO

LETTER FROM THE COUNCIL CHAIRMAN

What is LIA's secret? Why is LIA's track record of individual and community transformation so strong and visible, when so many missions and development initiatives seem to be struggling to make a discernible impact?

I've seen firsthand how communities, and the churches in those communities, are nearly unrecognizable, compared to their former selves, after partnership with LIA.

LIA's biggest "secret" is that LIA does so **little**. Yes, the secret of LIA's primary strategy is that LIA leverages its resources and the resources of its donors by inspiring, training, facilitating, mobilizing and **empowering** groups of churches that already exist in the local community to do the "doing."

Through this equipping, LIA is able work with a group of churches in the community *temporarily* (typically three years) and *in the background*, and then able to confidently move on to additional communities, knowing that the work will continue long after LIA's active involvement has transitioned to secondary support.

And, it's more than just a theory. Dr. Florence Muindi, LIA's founding president/CEO, recently told me, to date, 100% of the churches that have come alongside LIA for the 3-year program are still actively engaged in integrated transformational ministry after LIA exited the scene.

And now, LIA is poised to share its "secret" with the world. In 2015, LIA is opening a training center in Nairobi, Kenya, to host organizations, churches and individuals from around the world who are seeking to make a similar impact in their spheres of influence. Once again, LIA's implementing its "secret"—not seeking to be the primary "do-ers" of the work, but instead leveraging its resources to equip and train others to be the frontline instruments of transformation.

They say that secrets are hard to keep. Don't keep this one. Take an opportunity to share LIA's secret with someone you know and take advantage of the opportunity and privilege of partnering with LIA in making a transformational impact on the world.

Doug Hansen, JD

Chairman
LIA US Advisory Council, International Board Member

On meeting the staff of LIA, I have been struck with how they are very **PROFESSIONAL**, but at the same time they are **CHRIST-CENTERED**. LIA proves that the two are not mutually exclusive. I *enjoy* interacting with LIA to solve problems together in what has not been an easy project to implement. The **OPENNESS**, **INTEGRITY**, and **Godliness** of both the international office and national office staff has been something that has impressed me very much.

KENYA

Jannine Ebenso, Head of Quality Assurance, The Leprosy Mission International

LIA'S APPROACH TO TRANSFORMATIONAL DEVELOPMENT

Poverty takes away life. Our deep conviction is that poverty prevents people from fully realizing their God-given worth, freedom and potential. LIA exists to restore life to the most vulnerable people in the world's most difficult places.

In order to do so, we must **TRANSFORM. TOGETHER.**

We must join together to bring about healthy, lasting change in hurting communities across the world. God calls us to take part in His transforming work and promises that we, too, will be transformed in the process.

At LIA, we believe the local church is the catalyst to this transforming work. We take an integrated approach to mobilizing the local church to restore health, renew hope and inspire lasting transformation for its most vulnerable families. Our transformational development model cultivates local leadership through the Church and requires the participation and ownership from the community itself. Specifically, we train, equip and walk with local churches throughout Africa and the Caribbean to:



EMPOWER *The Poor with ECONOMIC OPPORTUNITIES*

PROMOTE *Health and prevent Disease*

EQUIP *The Vulnerable to BREAK THE CYCLE*

EDUCATE *the Marginalized*

\$ EMPOWER *The Poor with ECONOMIC OPPORTUNITIES*

Earning capacity and savings are the basis for material poverty alleviation. Dignity and self-worth are made complete providing for one's family. LIA focuses on economic empowerment opportunities that promote self-sufficiency and innovation to create value in a given economy.

+ PROMOTE *Health and prevent Disease*

Health is the basis for life. Each and every community that LIA serves has a specific emphasis on health promotion and disease prevention. This is carried out in a community-identified manner that builds upon existing assets, capacity and the established health network (when possible).

Read more specifics about LIA programs and impact at LIFEINABUNDANCE.ORG

📣 EQUIP *The Vulnerable to BREAK THE CYCLE*

Community mobilization is the basis for breaking the cycle. In order for them to lift themselves out of restricting poverty, they must be equipped to do so. LIA walks alongside communities as they identify the structural evil that perpetuates their circumstances and LIA encourages its church partners to fully utilize their unique role by advocating for its most vulnerable members.

📖 EDUCATE *the Marginalized*

Education is the basis for development. All LIA initiatives include community-wide seminars and targeted educational interventions, depending upon the identified needs, assets and capacity within a community. Specific attention is always given to developing the practical theology of our community church partners.

LIA'S TRANSFORMATIONAL DEVELOPMENT MODEL

1 LIA partners with the local church to build its capacity to meet needs of its community for the long-term. When no formal church exists, LIA helps build the capacity of local believers.

2 The most important aspect in transformational development is cultivating local leadership through training, equipping and working with them as they meet their community's needs.

Once the program is established and local leadership capacity is developed, LIA begins to decrease involvement, so the community may take complete ownership.



3 Local leadership works with LIA to identify and implement integrated, long-term solutions that address the root causes of poverty, both physically and spiritually. LIA then helps the community apply its training with the first integrated initiative, an orphans and vulnerable children program.



Although the realities of poverty might look different in every community, what remains constant is that the most vulnerable people in these communities are often the children.

We've learned that when we address the needs of the most vulnerable first—the orphaned and vulnerable children, and their families—we have seen the greatest level of impact and change among the community.

By implementing an orphaned and vulnerable children (OVC) program as the first intervention in communities, we can use that program to demonstrate and lay the foundation for transformational development in the community.

This is one way that we equip the local church to implement additional, supplemental programs to address the needs of the greater community.

In 2013, LIA helped implement OVC programs in seven countries, benefiting nearly 6,400 youth and their families.



1ST

INTERVENTION:
Serving the MOST
VULNERABLE

ETHIOPIA

COMMUNITIES in TRANSFORMATION

Highlights from 2013

As we continue to faithfully and humbly serve our Lord in the work that He has called us to, we are constantly amazed at the blessings and progress He grants across the 10 countries where LIA serves. Here are some highlights of significant ministry activities from 2013 in both established and emerging countries for LIA:

📈 ECONOMIC EMPOWERMENT HIGHLIGHTS

Last year, 1,791 people received business and skills training to empower them to provide for their families. By year's end, 464 received micro-loans, and 715 people started their own businesses. In Djibouti, specifically, 16 women were providing for their families in a culture that was previously unaccepting of women business owners.

The KONJO shoe project in Kibera, Kenya, spun off businesses with many products and services—further empowering women and multiplying the program's impact.

+ COMMUNITY HEALTH HIGHLIGHTS

19,191 people were served through integrated, church-led community health programs in 2013.

One area of note was the addition of the medical clinic in Haiti, serving the hurting people of Jacmel, a southern city. Nearly 4,000 people were served and the clinic demonstrated to local churches the impact that comes with transformational development initiatives.

📢 SOCIAL ENGAGEMENT HIGHLIGHTS

In 2013, LIA helped implement orphaned and vulnerable children programs in seven countries, benefiting nearly 6,400 youth and their families. Currently, all LIA countries are engaged in OVC work. 1,855 youth received biblical teachings, relevant to their given context.

📖 EDUCATION HIGHLIGHTS

Nearly 4,000 youth received education services in varying ways through LIA programs with its local church partners.

Three education programs, in particular—in Ethiopia, Djibouti and South Sudan—are having even more significant impact on the local communities than expected!

RESULTS

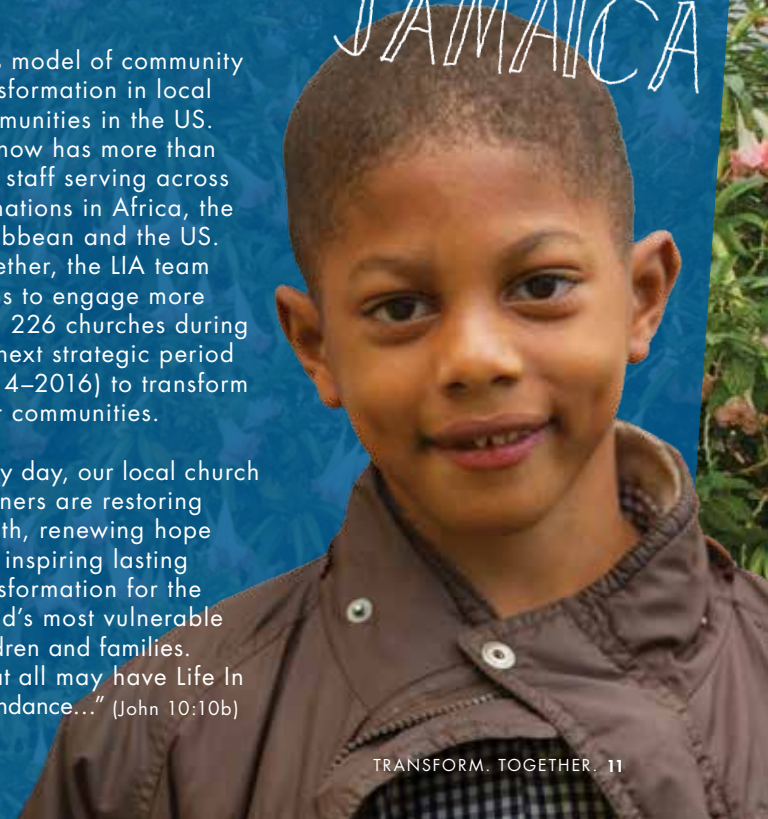
In 2013, LIA partnered with more than 120 churches to serve more than 47,000 people directly. Through this service, more than 10,000 were evangelized, 600 known to receive Christ and 200 new believers were disciplined—some in extremely unsafe communities for Christ's followers.

Our training center in Jamaica was utilized to equip local church leadership from around the world, ground was broken on our new training center in Nairobi, Kenya, and steps were taken to begin replicating

LIA's model of community transformation in local communities in the US. LIA now has more than 150 staff serving across 10 nations in Africa, the Caribbean and the US. Together, the LIA team plans to engage more than 226 churches during the next strategic period (2014–2016) to transform their communities.

Every day, our local church partners are restoring health, renewing hope and inspiring lasting transformation for the world's most vulnerable children and families. "That all may have Life In Abundance..." (John 10:10b)

JAMAICA



YABSIRA & FIKERTE'S STORY



ETHIOPIA

Just 24 months ago, 12-year-old Yabsira was at risk: of dropping out of school, of moving to the streets, of using undesirable means to get his next meal.

His mother, Fikerte, laid on the roadside handicapped, begging to provide for Yabsira and his baby sister. His unfaithful father abandoned them after infecting Fikerte with HIV. She did her best to provide a home, but begging wasn't enough. Yabsira was struggling in school—due in large part to hardships at home. Fikerte considered the impossible: turning her innocent son to life alone on the street.

Then, their church, empowered by LIA, intervened.

Yabsira was welcomed into an after-school tutoring program and, immediately, his life and outlook began to turn around with the support of a mentor. Fikerte was given a wheelchair through an LIA partner, and received a micro-loan to open a small fruit stand. Two months later, this ambitious woman tripled the size of her fruit stand, and opened two other businesses: a cell-phone charging business with a coffee tent for customers, and a charcoal vending business.

Today, Yabsira is a happy teenager. He excels in his studies while helping mom with her work after school. He and his family have been transformed, and they are walking in celebration of God's grace.

WHERE WE SERVE

- Current Countries
 - Egypt
 - Sudan
 - South Sudan
 - Eritrea
 - Ethiopia
 - Djibouti
 - Somaliland
 - Kenya
 - Haiti
 - Jamaica
 - United States of America

- Future Initiatives
 - Uganda
 - Rwanda
 - Burundi
 - DR Congo



■ LIA Headquarters ■ Training Center ■ LIA US Office

HAITI

LIA has a very compelling approach to **SERVING** the **LEAST OF THESE**. Over the years we have had many **opportunities** to help people in **NEED** both **LOCALLY** and **GLOBALY**. The interesting thing we have found is that no matter the amount of **HELP**, the **PROBLEMS** still existed and in some cases were worse after our help. LIA has **RECOGNIZED** the reasons for this dilemma is the problem has not been adressed. The root cause of **POVERTY** and/or need is a **relationship** with **JESUS CHRIST**. True health and healing can only occur in the context of a right relationship with **JESUS**. LIA is able to **Serve** the basic physical needs of the people in a way that helps **RESTORE** their dignity and **develops** a relationship with **JESUS**.

This occurs in a direct partnership with the **LOCAL CHURCHES** and a **WELL-DEVELOPED** system of accountability. The benefit to this approach is that LIA can establish a work in a **COMMUNITY** and when they leave, the **local churches** and their members are able to continue serving the community and developing **DISCIPLES**. We are very pleased with the **results** LIA can provide using a simple approach. **HELPING PEOPLE HELP THEMSELVES**. The results are more consistent and last longer.

Dennis and Kristen Wiley, Donors, Kansas



FINANCIAL ASSESMENT of 2013

Year-over-year, God continues to provide for this ministry in ways only He can. I'm fortunate to have joined a team that is committed to good corporate governance and transparency, accountability and stewardship. Even during the last year, it was humbling to take an active role in further enhancing those practices for the organization.

LIA is an accredited member in good standing with the Evangelical Council for Financial Accountability (ECFA) and adheres strictly to its Seven Standards for Responsible Stewardship. These standards establish best practices in board governance, financial transparency, integrity in fundraising and proper use of ministry resources. The standards of both organizations incorporate accountability measures that LIA takes to ensure that we are giving our best, because the vulnerable we serve deserve nothing less.

2013 FINANCIAL RESULTS

The total revenue received in 2013 increased by 1.2% to \$3.2 million (excluding the acquisition of the Jamaica training center in 2012). This total includes funds received from in-country local partners in Ethiopia and Djibouti, as well as income generated from LIA-run projects in Kenya, South Sudan and Jamaica. The direct program funds were 89% of all expenses, consistent with FY 2012 figures.

DONATIONS

In 2013, \$2.99 million was received from USA Partners. The donations consist of individual donations (28%), churches donations (33%), foundations and para-church ministries donations (28%) and others (10%). The Gifts-in-Kind were 1% of total donations.

ASSETS

LIA had \$3.46 million in total assets in 2013. The organization does not have any structured or unstructured debt.

WHAT'S AHEAD?

As we focus on 2014 and beyond, the prospects are enormous. The Kenya Training Center is currently under construction and is expected to be completed in December 2014. This will be a great milestone for the ministry, and a valuable asset.

We are aggressively implementing new fundraising strategies to serve the poor and vulnerable. Consistent with our model of local ownership, this includes new

fundraising and income initiatives by LIA's in-country offices, as well as at the local community level. It is exciting to see pastors and community leaders adopting the vision for local transformation **and** implementing systems to sustain this work in their own communities, as well as others. This growth in income will allow us to better serve those we have been called to serve, together.



Thank you for partnering with us in this mission.



Tom Kemner
Director, Partnerships

*Review LIA's financial results in greater detail at ecfa.org or guidestar.org

SUPPORT AND REVENUE	UNRESTRICTED	TEMP RESTRICTED	TOTAL
Contributions	\$774,108	\$2,040,787	\$2,814,895
Contributions – Gifts-In-Kind	\$43,857	—	\$43,857
Special Events Support	\$129,526	—	\$129,526
Special Events Direct Benefit Costs	(\$6,713)	—	(\$6,713)
Book and Craft Sales	\$3,287	—	\$3,287
Loss on Sale of Equipment	(\$114)	—	(\$114)
Interest Income	\$278	—	\$278
	\$944,229	\$2,040,787	\$2,985,016
NET ASSETS RELEASED DUE			
To Satisfaction of Restrictions	\$2,077,874	(\$2,077,874)	—
TOTAL SUPPORT AND REVENUE	\$3,022,103	(\$37,087)	\$2,985,016
EXPENSES			
Program Services	\$2,901,232	—	\$2,901,232
Management and General	\$225,766	—	\$225,766
Fundraising	\$141,295	—	\$141,295
TOTAL EXPENSES	\$3,268,293	—	\$3,268,293
CHANGE IN NET ASSETS	(\$246,190)	(\$37,087)	(\$283,277)
NET ASSETS – BEGINNING OF YEAR	(\$37,509)	\$3,741,185	\$3,703,676
NET ASSETS – END OF YEAR	(\$283,699)	\$3,704,098	\$3,420,399

SUPPORT AND REVENUE	UNRESTRICTED	TEMP RESTRICTED	TOTAL
Contributions	\$633,827	\$2,317,964	\$2,951,791
Contributions – Gifts-In-Kind	\$144,785	\$1,852,610	\$1,997,395
Special Events Support	\$185,044	—	\$185,044
Special Events Direct Benefit Costs	(\$39,257)	—	(\$39,257)
Book and Craft Sales	\$6,936	—	\$6,936
Loss on Sale of Equipment	—	—	—
Interest Income	\$828	—	\$828
	\$932,163	\$4,170,574	\$5,102,737
NET ASSETS RELEASED DUE			
To Satisfaction of Restrictions	\$1,634,980	(\$1,634,980)	—
TOTAL SUPPORT AND REVENUE	\$2,567,143	\$2,535,594	\$5,102,737
EXPENSES			
Program Services	\$2,569,246	—	\$2,569,246
Management and General	\$153,042	—	\$153,042
Fundraising	\$102,818	—	\$102,818
TOTAL EXPENSES	\$2,825,106	—	\$2,825,106
CHANGE IN NET ASSETS	(\$257,963)	\$2,535,594	\$2,277,631
NET ASSETS – BEGINNING OF YEAR	\$220,454	\$1,205,591	\$1,426,045
NET ASSETS – END OF YEAR	(\$37,509)	\$3,741,185	\$3,703,676

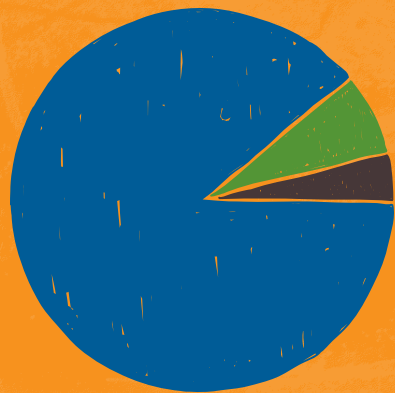
CURRENT ASSETS	2013	2012
CASH	—	\$150,632
Pledges Receivable	\$2,384,580	\$2,566,271
Inventory	—	\$15,010
Prepaid Expenses	\$1,750	\$7,478
TOTAL CURRENT ASSETS	\$2,386,330	\$2,739,391
PROPERTY AND EQUIPMENT		
Computers and Office Equipment	\$57,307	\$59,736
Website Development	\$14,910	\$14,910
Construction in Progress – Kenya Training Center	\$50,780	\$6,815
Land in Kenya	\$215,090	\$215,090
Less: Accumulated Depreciation	(\$33,793)	(\$15,734)
NET PROPERTY & EQUIPMENT	\$304,294	\$280,817
OTHER ASSETS		
Pledges Receivable – Noncurrent Portion	\$401,290	\$177,500
Cash Designated for Training Center Construction	\$372,712	\$516,166
Deposits	\$1,840	\$1,140
TOTAL OTHER ASSETS	\$775,842	\$694,806
TOTAL ASSETS	\$3,466,466	\$3,715,014

CURRENT LIABILITIES	2013	2012
Accounts Payable & Accrued Expenses	\$46,068	\$11,338
TOTAL LIABILITIES	\$46,068	\$11,338
NET ASSETS		
Unrestricted Net Assets	(\$283,700)	(\$37,509)
Temporarily Restricted Net Assets	\$3,704,098	\$3,741,185
TOTAL NET ASSETS	\$3,420,398	\$3,703,676
TOTAL LIABILITIES AND NET ASSETS	\$3,466,466	\$3,715,014

I HAVE COME THAT THEY MAY HAVE
LIFE, AND HAVE IT IN ABUNDANCE

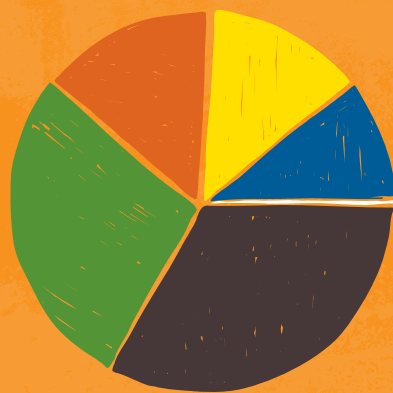
John 10:10B

FINANCE TO PROGRAM EXPENDITURES



- 89% Program
- 7% Management
- 4% Fundraising

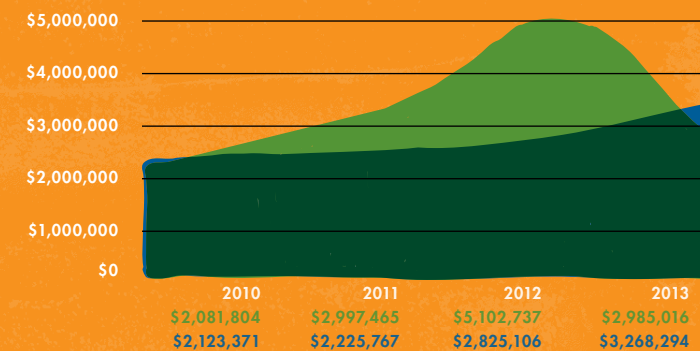
INCOME SOURCES



- 33% Church
- 28% Individuals
- 15% Para-Church
- 13% Foundations
- 10% Mission Teams
- 1% In-Kind

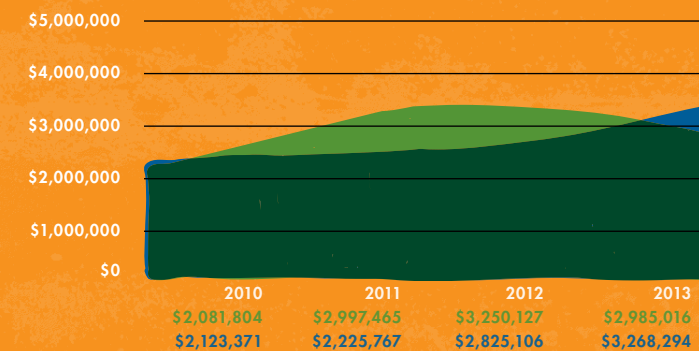
The below charts demonstrate the historical financial trends for LIA income (support from US donors and partners) and expenditures. The left graph includes the acquisition of the LIA training center in Jamaica in 2012, while the right graph shows a more accurate picture of income to expenditures, excluding the property acquisition.

■ Income
■ Expenditures



*The above figures account for a major gift of property, the LIA Jamaica training center, in 2012

HISTORICAL FINANCIAL TRENDS



*The above figures exclude the gift of a training center property in 2012

SENIOR MANAGEMENT

Dr. Florence Muindi, MD, MPH
Founding President/CEO

Tom Kemner
Director, Partnerships

Collins Bonyo, MBA, CPA
Director, Finance

James Gatere, CPA
Director, HR & Administration

Victor Mikebanya, MSc
Regional Director, Emerging Countries

Yared Mekuria, MD
Regional Director, Established Countries

BOARD OF DIRECTORS

Peter Okaalet, MD, M.Div., M.Th
Chairman
Director, Okaalet & Associates
Kenya

Girma Begeshaw, MA, PhD
Vice Chairman
National Director, World Vision Kenya
Ethiopia

Sammy Mwangi, ACMA, CPA
Treasurer
Director, Saman Associates
Kenya

Florence Muindi, MD, MPH
Secretary
Founding President/CEO, Life In Abundance International
Kenya

BOARD MEMBERS

Doug Hansen, JD
President, International Automated Systems, Inc.
USA

George Taban, MA
Associate Regional Secretary, IFES-ESPA
South Sudan

Ghada Anglo
Country Coordinator, Sudan Child Evangelism & Fellowship
Sudan

Joshua Wathanga, MSc, MBA
Regional Change Manager, Oxfam
Kenya

Wubitu Abere, MA
Country Leader
The International Leprosy Mission – Ethiopia
Ethiopia

Yasmine Ahmed, CPA
Project Officer, UNFPA
Djibouti

NATIONAL ADVISORY COUNCIL (USA)

Doug Hansen, JD
Chairman
President, International Automated Systems, Inc.

James Headlee
CEO, eBridge Global

Thomas McKechnie, MD
Emergency Medicine,
Norton Medical Center

Martin Widyono
First Vice President,
One West Bank

Grace Roberts Dyrness, D.P.D.S.
Director and Senior Researcher, Institute for Urban Research and Development

COUNTRY DIRECTORS

Amani Khalil, MD
Egypt

Geleta Simesso
Ethiopia

George Rono
Haiti

Etienne Mujangi
Horn of Africa

Ali Omer
Horn of Africa

Sampson Errol
Jamaica

Alice Wainaina
Kenya
Interim Director/Assistant Regional Director

Richard Bullen
South Sudan

Noureddin Mahmoud
Sudan

CONTACT INFORMATION

ADDRESS

Life In Abundance International
1907 Ascension Blvd.
Suite 240
Arlington | TX 76006

PHONE/FAX

T 626 213 2203

F 866 LIA 3336

ACKNOWLEDGMENTS

This ministry could not be possible without the generous support of our donors. Thank you for coming alongside this ministry as we mobilize the local church to restore health, renew hope and inspire lasting transformation for the world's most vulnerable children and families.

WEB/SOCIAL

LIFEINABUNDANCE.ORG
Facebook.com/LifeInAbundance
Instagram.com/LIASojourner
@LIAINT

SUSTAINING PARTNERS

Thank you to the following organizations for their generous donations of talent and resources to produce this report.

Rule29
rule29.com

O'Neil Printing
oneilprint.com

Medical Teams International has had the **PRIVILEGE** of partnering with LIA since 2002 in HIV and AIDS related projects. We share a *common passion* to **STRENGTHEN** African leaders and equip local churches to transform their **communities**. Throughout our *partnership*, LIA has been very responsive, **TRANSPARENT**, and accountable, applying best practices in their strategies and programs, and build **STRONG COLLABORATIONS** with local churches, community leaders, government officials and other **NGOs**. Medical Teams International is very **HONORED** to partner with Life In Abundance.

Debbie Doty, Manager, African Programs, Medical Teams International

A young girl with a bright smile peering through a wooden door frame. She is wearing a red shirt. The background is a rustic wooden wall.

ETHIOPIA